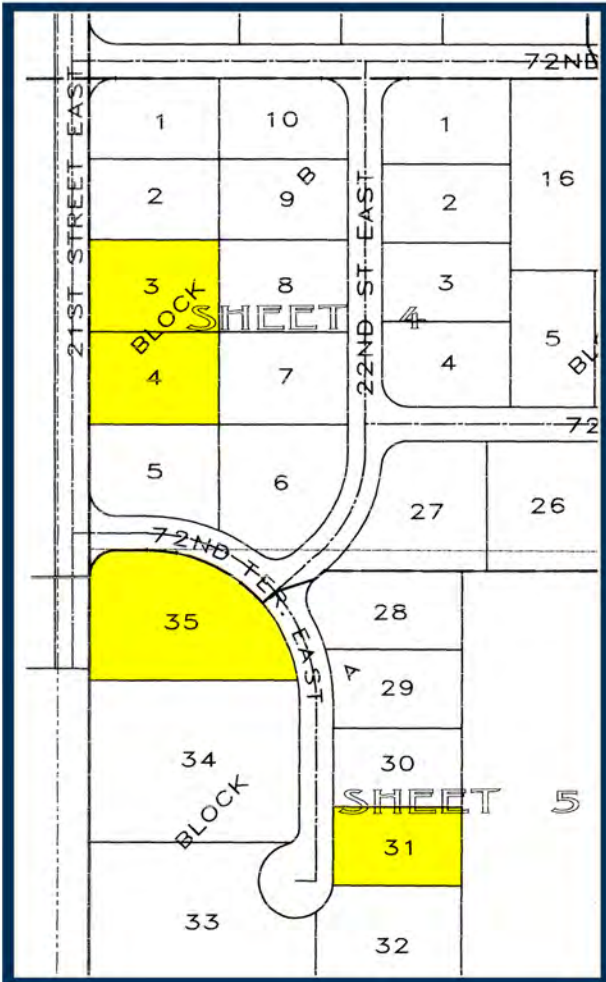




4 INDUSTRIAL LOTS - CENTRE PARK OF COMMERCE

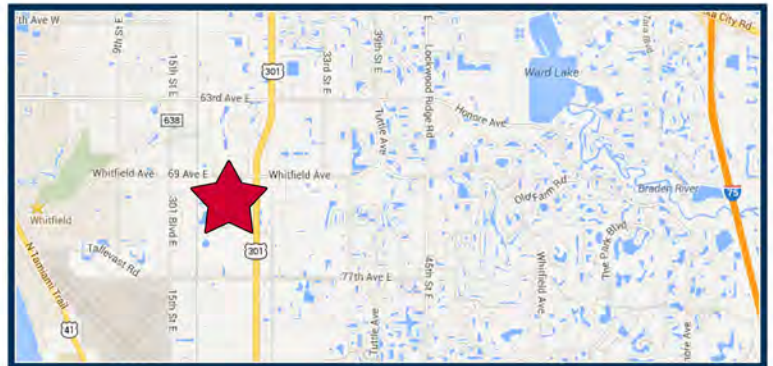


LOT 3 - BLOCK B
 25,555+/- SQ. FT. **\$70,500**

LOT 4 - BLOCK B
 25,541+/- SQ. FT. **\$70,500**

LOT 31 - BLOCK A
 21,851+/- SQ. FT. **\$65,000**

LOT 35 - BLOCK A
 47,553+/- SQ. FT. **\$131,000**



ALL PROPERTIES ARE FEATURED AT
www.SARASOTA-INDUSTRIAL.COM

941.957.3730
 OFFICE

ROBERTA "BJ" KOLTON

RobertaKolton@MichaelSaunders.com



941.552.5216
 FAX

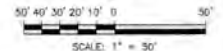
ROBERT "BOB" KOLTON

RobertKolton@MichaelSaunders.com

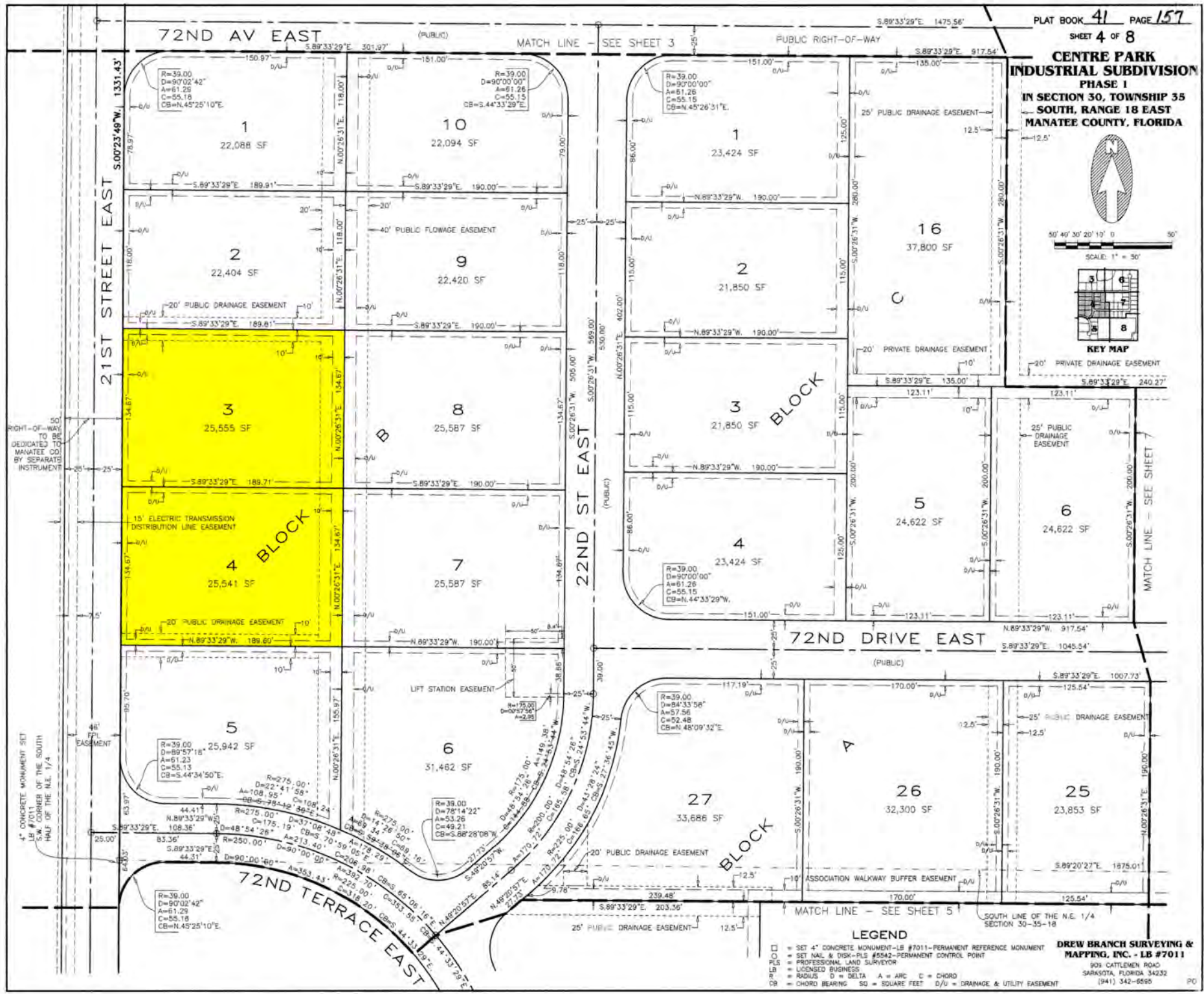
SPECIALIZING IN INDUSTRIAL & COMMERCIAL PROPERTIES

Price and availability is subject to change without notice. The information being provided to you is not guaranteed to be free of errors. No independent verification of the accuracy of any information or documentation is represented by the real estate licensee. If you intend to rely on the information provided, you are notified that you should confirm any such information directly with the appropriate governmental authority, the seller and its counsel, or your own independent advisors and counsel. Any copyrighted material shall remain such. Unless provided in writing, no information or documentation provided shall be distributed, disseminated, or reproduced to any third party.

**CENTRE PARK INDUSTRIAL SUBDIVISION
PHASE I
IN SECTION 30, TOWNSHIP 35
SOUTH, RANGE 18 EAST
MANATEE COUNTY, FLORIDA**



KEY MAP



RIGHT-OF-WAY DEDICATED TO MANATEE CO. BY SEPARATE INSTRUMENT

4" CONCRETE MONUMENT SET LB #7011 CORNER OF THE SOUTH S.W. CORNER OF THE N.E. 1/4

LEGEND

- = SET 4" CONCRETE MONUMENT-LB #7011-PERMANENT REFERENCE MONUMENT
- = SET NAIL & DISK-PLS #5542-PERMANENT CONTROL POINT
- = PROFESSIONAL LAND SURVEYOR
- = LICENSED BUSINESS
- R = RADIUS D = DELTA A = ARC C = CHORD
- CB = CHORD BEARING SQ = SQUARE FEET D/U = DRAINAGE & UTILITY EASEMENT

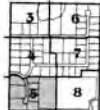
DREW BRANCH SURVEYING & MAPPING, INC. - LB #7011
905 CATTLEMEN ROAD
SARASOTA, FLORIDA 34232
(941) 342-6666 PO

**CENTRE PARK INDUSTRIAL SUBDIVISION
PHASE 1
IN SECTION 30, TOWNSHIP 35 SOUTH, RANGE 18 EAST
MANATEE COUNTY, FLORIDA**

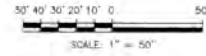
LEGEND

PLAT BOOK 41 PAGE 158

SHEET 5 OF 8

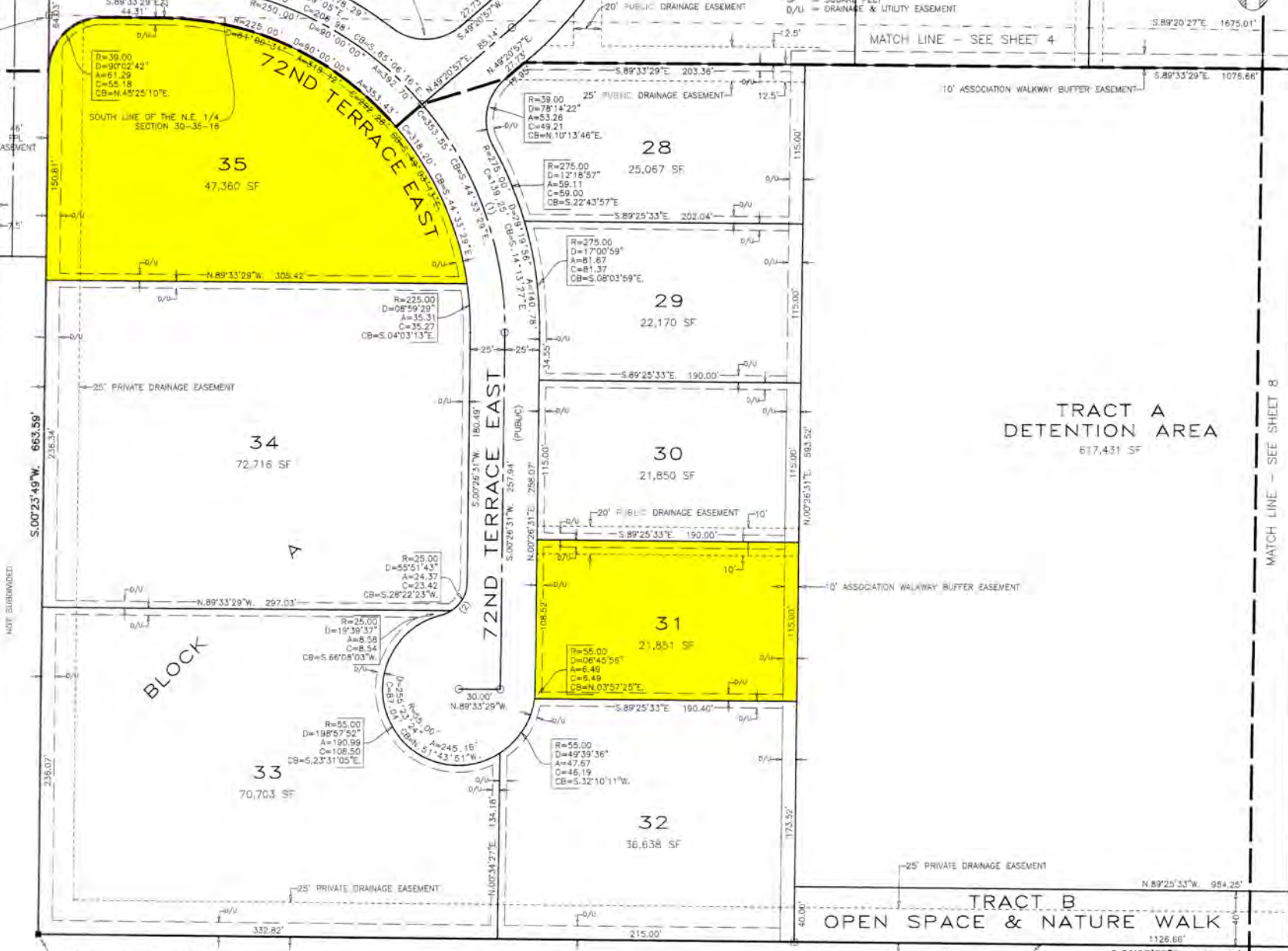


- = SET 4" CONCRETE MONUMENT-LB #7011-PERMANENT REFERENCE MONUMENT
- = SET NAIL & DISK-PLS #5542-PERMANENT CONTROL POINT
- = PROFESSIONAL LAND SURVEYOR
- = LICENSED BUSINESS
- = RADIUS
- = DELTA
- = ARC
- = CHORD
- = CHORD BEARING
- = SQUARE FEET
- = DRAINAGE & UTILITY EASEMENT



4" CONCRETE MONUMENT SET LB #7011 S.W. CORNER OF THE SOUTH HALF OF THE N.E. 1/4

15' ELECTRIC TRANSMISSION DISTRIBUTION LINE EASEMENT



NOT SUBDIVIDED

MATCH LINE - SEE SHEET 8

CURVE TABLE

NO.	RADIUS	DELTA	ARC	CHORD	CHORD BEARING
1	250.00'	41°05'54"	179.30'	175.48'	S.20°06'16"E
2	25.00'	75°31'21"	32.95'	30.82'	S.38°12'11"W

NOT SUBDIVIDED

SOUTH LINE OF THE N 1/2 OF THE N 1/2 OF THE S.E. 1/4

S.89°25'33"E. 1674.48'

DREW BRANCH SURVEYING & MAPPING, INC. - LB #7011

909 CATTLEMEN ROAD
SARASOTA, FLORIDA 34232
(941) 342-8698

PD