



Michael Saunders & Company[®]

Commercial
LICENSED REAL ESTATE BROKER

9,000 SQ. FT. 3-UNIT INDUSTRIAL BUILDING



1598 APEX ROAD

SARASOTA, FLORIDA

SALE \$720,000

ALL PROPERTIES ARE FEATURED AT
WWW.SARASOTA-INDUSTRIAL.COM

941.957.3730
OFFICE

SUSAN GOLDSTEIN



941.552.5216
FAX

ROBERTA KOLTON

SUSANGOLDSTEIN@MICHAELSAUNDERS.COM

ROBERTAKOLTON@MICHAELSAUNDERS.COM

Price and availability is subject to change without notice. The information being provided to you is not guaranteed to be free of errors. No independent verification of the accuracy of any information or documentation is represented by the real estate licensee. If you intend to rely on the information provided, you are notified that you should confirm any such information directly with the appropriate governmental authority, the seller and its counsel, or your own independent advisors and counsel. Any copyrighted material shall remain such. Unless provided in writing, no information or documentation provided shall be distributed, disseminated, or reproduced to any third party.

Property Information Sheet

1598 Apex Road
Sarasota

Square Feet: 9,000

Sq. Ft. Office: 1,500

Sq. Ft. Shop: 7,500

Land Size: 0.71 Acres (30,887 sq. ft.)

Zoning: PID

Year Built: 1988

Electrical (Phase): Single & 3-Phase

Amps - Volts: 500 - 110/220

Ceiling Height: 12' - 16'

Overhead Doors: 4

Loading Dock: No

Fire Sprinklers: No

Parking: 17 +/-

Taxes: \$3,487.10

Occupancy: At closing or lease execution.

Industrial Park: Eastern Industrial Park

\$720,000.00

Sales Price

\$80.00

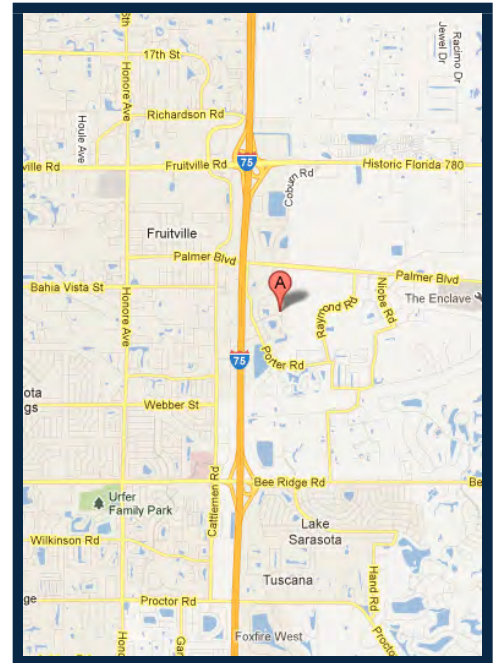
Per Sq. Ft.

\$0.00

Lease Rate

\$0.00

Per Sq. Ft.



3-unit industrial building available for sale in Eastern Industrial Park. Great corner location with good parking, located just south of Fruitville Road and east of I-75. Great opportunity for single user or user/investor who wants to occupy a portion and lease the remainder.

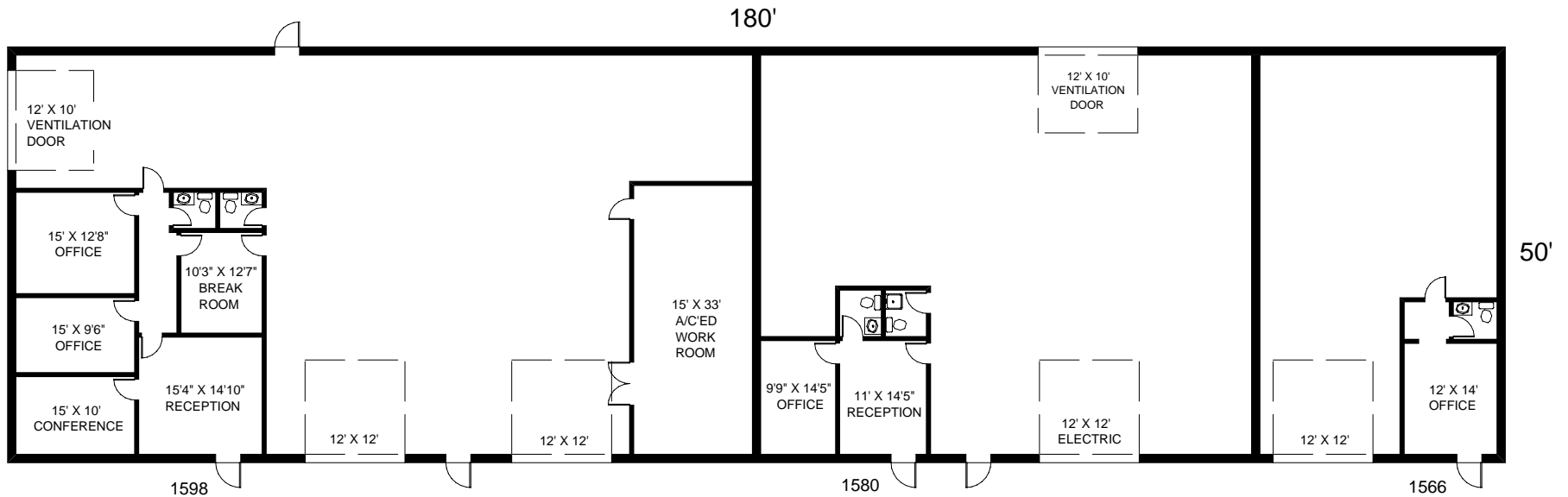
4,500 sq. ft. unit has approximately 950 sq. ft. of office area. Warehouse has 2-12'x12' doors in front and 1 ventilation door, plus large A/C'ed work room. Unit has both 3-phase and single phase panels.

3,000 sq. ft. unit has reception area and single office, plus clean warehouse area with 12'x12' electric door in the front and ventilation door in the rear. This unit has single phase electric.

1,500 sq. ft. unit with small 250 sq. ft. office. Clean warehouse area with single phase electric and 12'x12' overhead door.

Call Roberta Kolton at 941.957.3730 for more information.

THE INFORMATION CONTAINED HEREIN PRESENTED IS BELIEVED TO BE FACTUAL TO THE BEST OF OUR KNOWLEDGE BUT SHOULD NOT BE CONSTRUED TO BE WARRANTED BY MICHAEL SAUNDERS AND COMPANY.



1598 APEX ROAD

SARASOTA, FLORIDA

NOTE: Not drawn to exact scale. Some measurements are approximate. Do not duplicate, publish, modify or otherwise distribute these materials unless specifically authorized by Susan Goldstein, Roberta Kolton or Michael Saunders & Company. The information being provided to you is not guaranteed to be free of errors. No independent verification of the accuracy of any information or documentation is represented by the real estate licensee.